

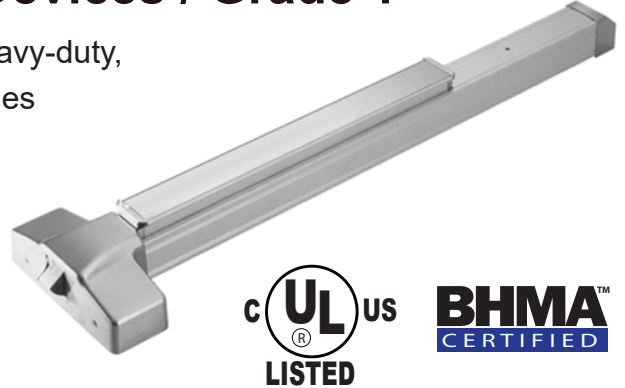
GRADE 1 WIDE STILE EXIT DEVICES

SCH8600/8800 Series Rim Exit Devices / Grade 1

The SCH8600/8800 Series provides a full range of heavy-duty, wide stile Panic and Fire-Rated Exit Devices. This series combines durability, safety, and aesthetics to meet modern security and access control requirements.

SCH8610S/SCH8810S: Panic-Rated Rim Exit Device

SCH8610F/SCH8810F: Fire-Rated Rim Exit Device



Certifications

- ANSI Certification: Compliant with ANSI A156.3 - 2020 Grade 1 standard.
- UL/cUL Listed: Certified as Panic Exit Hardware or 3-hour Fire-Rated Exit Hardware.

Applications

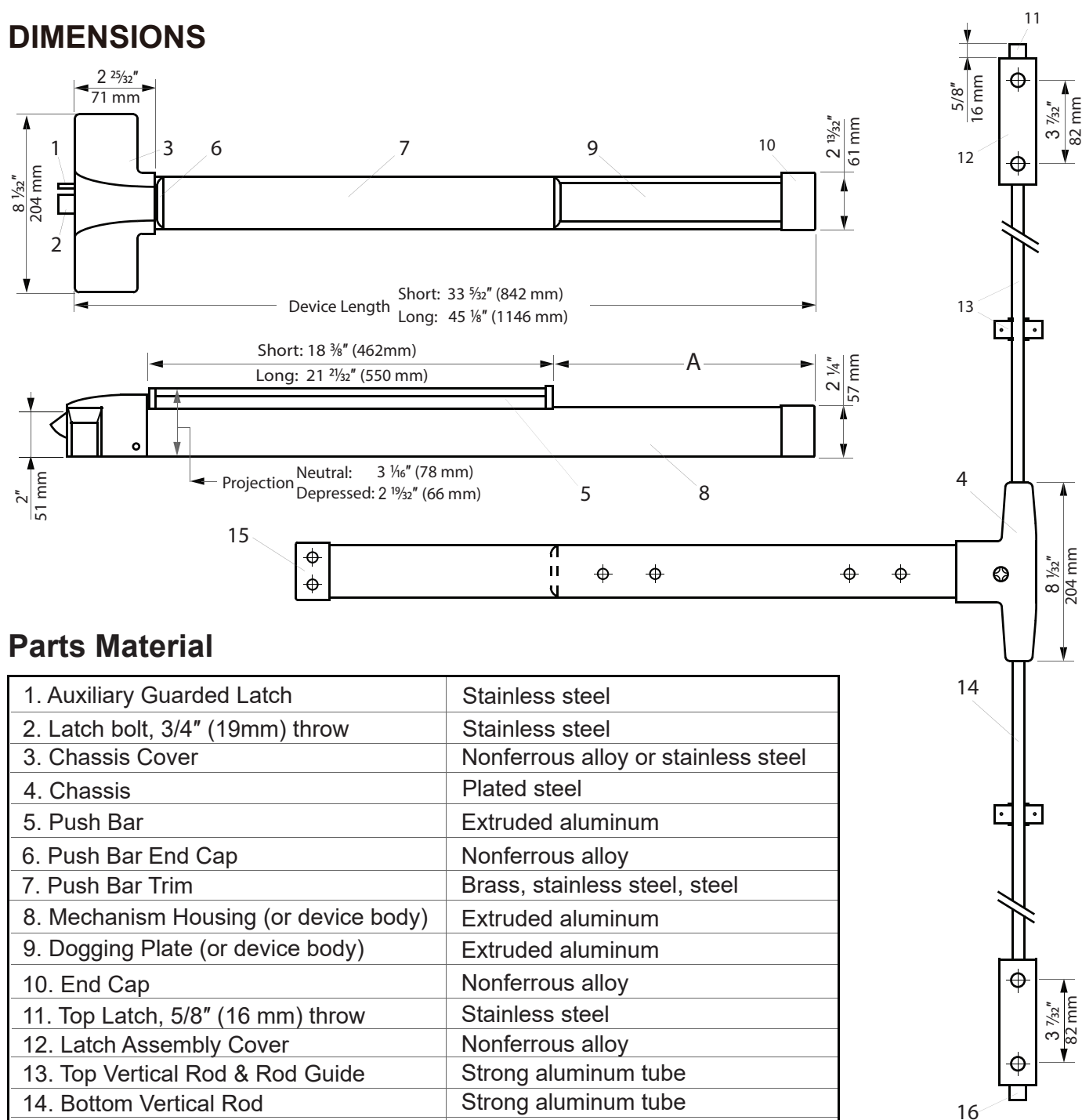
- The SCH8610S / SCH8810S rim exit devices are compatible with single and double doors that utilize a mullion.
- The SCH8610F / SCH8810F devices are designed for UL-listed fire-rated applications, supporting single doors up to 4' x 8' (1219 mm x 2438 mm) and double doors with a mullion up to 8' x 8' (2438 mm x 2438 mm).

Specifications

Device Lengths	Short (36"): 33 5/32" (842 mm) Long (48"): 45 1/8" (1146 mm)
Door Widths	36" - For 29" to 36" (736 mm to 914 mm) door size. 48" - For 33" to 48" (838 mm to 1219 mm) door size.
Minimum Stile Width	4 1/4" (107 mm)
Latch Boltset	3/4" (19 mm) throw, deadlocking design
Strikes	801 (panic), 802 (fire)
Dogging Kit	Panic devices: Standard Hex Key Dogging (RD). Fire-rated devices: No mechanical dogging (ND).
Dogging Options	Cylinder Dogging (CD) or Less Dogging (LD)
Mounting Fasteners	Panic devices: Standard with machine screws. Fire-rated devices: Supplied with sex nuts and bolts (SNB) as standard hardware. SNB are required to use for wood doors, order SNB separately.
Mounting Height	Device centerline from finished floor is 1016 mm (40") standard
Projection	Pushbar Neutral: 3 1/16" (78 mm) Pushbar Depressed: 2 19/32" (66 mm)

DIMENSIONS & DEVICE LENGTH

DIMENSIONS



Parts Material

1. Auxiliary Guarded Latch	Stainless steel
2. Latch bolt, 3/4" (19mm) throw	Stainless steel
3. Chassis Cover	Nonferrous alloy or stainless steel
4. Chassis	Plated steel
5. Push Bar	Extruded aluminum
6. Push Bar End Cap	Nonferrous alloy
7. Push Bar Trim	Brass, stainless steel, steel
8. Mechanism Housing (or device body)	Extruded aluminum
9. Dogging Plate (or device body)	Extruded aluminum
10. End Cap	Nonferrous alloy
11. Top Latch, 5/8" (16 mm) throw	Stainless steel
12. Latch Assembly Cover	Nonferrous alloy
13. Top Vertical Rod & Rod Guide	Strong aluminum tube
14. Bottom Vertical Rod	Strong aluminum tube
15. End Cap Bracket	Plated steel
16. Bottom Latch, 5/8" (16 mm) throw	Stainless steel

Device Length

The devices are precut for 36" (914 mm) and 48" (1219 mm) wide doors (standard shipping size).

Short 36" : Device length is 33 5/32" (842 mm) for 3' door use, with short push bar.

Long 48" : Device length is 45 1/8" (1146 mm) for 4' door use, with long push bar.

For narrow doors, trim the "A" portion to fit a door width minus 2" (51 mm).

Standard vertical rods fit 7' (2134 mm) panic exit doors or 8' (2438 mm) fire exit doors. For taller doors, specify the height when ordering to receive a longer top rod.