

# SURFACE MOUNTED DOOR CLOSERS

## Heavy Duty Commercial Door Closer Grade 1 Certified

### SCH8416BC



CONFORMS TO STANDARDS  
UL 10C AND UBC 7-2 (1997)



#### SCH8416BC DOOR CLOSERS CROSS REFERENCES

| SCH       | AMERICAN EAGLE | CORBIN RUSSWIN    | DESIGN HARDWARE | DOR-O-MATIC | HAGER | LCN  | NORTON | SARGENT | YALE |
|-----------|----------------|-------------------|-----------------|-------------|-------|------|--------|---------|------|
| SCH8416BC | 7100           | DC3000/<br>DC6200 | 1070/1370       | 1600        | 900   | 4040 | 50     | 281/350 | 4400 |

- UL and cUL listed; UL 10C fire-rated.
- ANSI A 156.4 Grade 1 certified.
- Barrier-free operation to comply with federal accessibility standards.
- Adjustable spring power size 1-6.
- Cast-iron body, forged-steel arm.
- Standard adjustable sweep and latching speed.
- Standard adjustable backcheck.
- Standard tri-pack for regular arm, top jamb, and parallel arm bracket.
- Standard self-tapping and drilling screws.
- Durable plastic cover.
- Lifetime warranty.

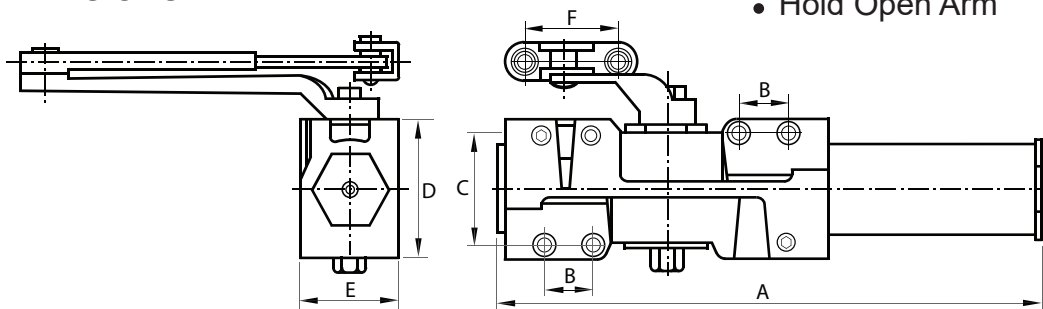
#### Finishes:

- AL (Alum)
- DU (Duro)
- BK (Black)

#### Optional Features

- Drop Plate
- Hold Open Arm

#### TECHNICAL DIMENSIONS



| DESCRIPTION                  | DIMENSIONS        | DESCRIPTION             | DIMENSIONS          |
|------------------------------|-------------------|-------------------------|---------------------|
| A. Length of Closer Body     | 11" (279.40 mm)   | D. Closer Body Height   | 2 3/4" (69.85 mm)   |
| B. Horizontal Mounting Holes | 1" (25.40 mm)     | E. Projection from Door | 2" (50.80 mm)       |
| C. Vertical Mounting Holes   | 2 1/4" (57.15 mm) | F. Arm Shoe Spacing     | 1 15/16" (49.21 mm) |

Tel: (888) 463-1194

Fax: (888) 990-0998

Email: [info@schproducts.com](mailto:info@schproducts.com)

Website: [schproducts.com](http://schproducts.com)

# HEAVY DUTY DOOR CLOSER ACCESSORIES

## Accessories for SCH8416BC Heavy Duty Commercial Door Closer



SCH8416-A1

### **SCH8416-A1 Drop Plate**

For top jamb installations where the ceiling is level with the top of the header. Requires a minimum 1 3/4" header height.

### **SCH8416-A2 Drop Plate**

For top jamb installation on door headers less than 3 1/2" in height.



SCH8416-A2



SCH8416-A3

### **SCH8416-A3 Parallel Arm Drop Plate**

For parallel arm installation on door rails less than 5 1/2" (measured down from the door stop). Required a 2" minimum height top door rail.

### **SCH8416-A4 Standard Drop Plate**

For pull side installation when the top door rail is less than 3 3/4". Requires a 2" minimum height door rail.



SCH8416-A4



SCH8416HDARM

### **SCH8416HDARM Heavy-Duty Arm**

Adjustable and available in three finishes (AL, DU, BK). Designed to be used with SCH8416BC closers.

### **SCH8416HDHOARM Heavy-Duty Hold-Open Arm**

Adjustable and available in three finishes (AL, DU, BK). Designed to be used with SCH8416BC closers.



SCH8416HDHOARM



SCH8416HDCUHOARM

### **SCH8416HDCUHOARM Heavy-Duty Hold-Open Cush Arm**

Adjustable and available in three finishes (AL, DU, BK). Designed to be used with SCH8416BC closers.

### **SCH8416HDCUARM Heavy-Duty Cush Arm**

Adjustable and available in three finishes (AL, DU, BK). Designed to be used with SCH8416BC closers.



SCH8416HDCUARM