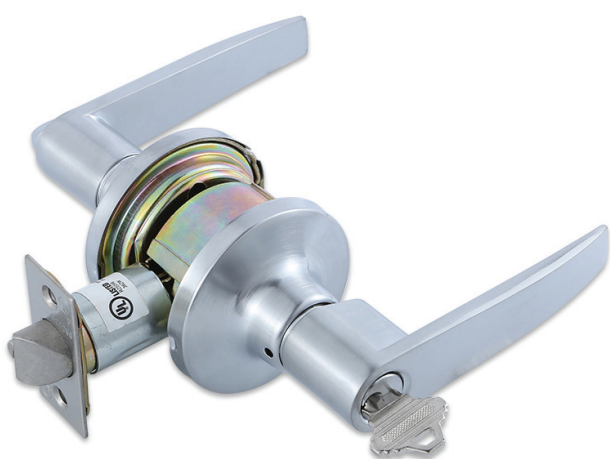


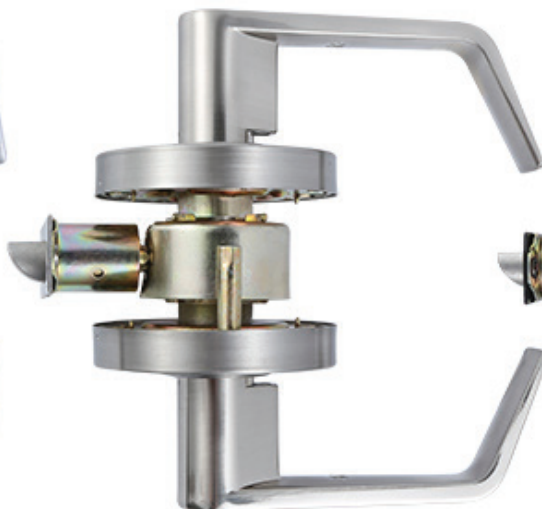
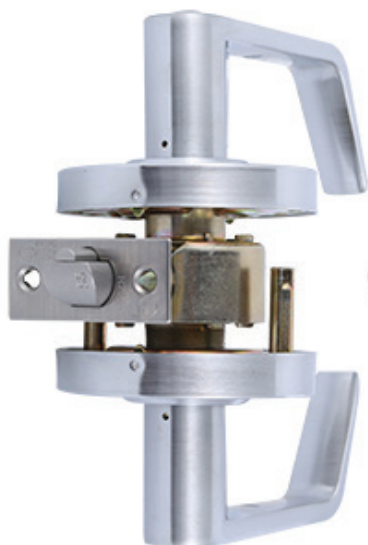
# ANSI GRADE 2 HEAVY DUTY CYLINDRICAL LEVERSET

## SCH2F6600 Series ANSI G2 Heavy Duty Cylindrical Leverset



### MODELS, TYPES, AND COLORS

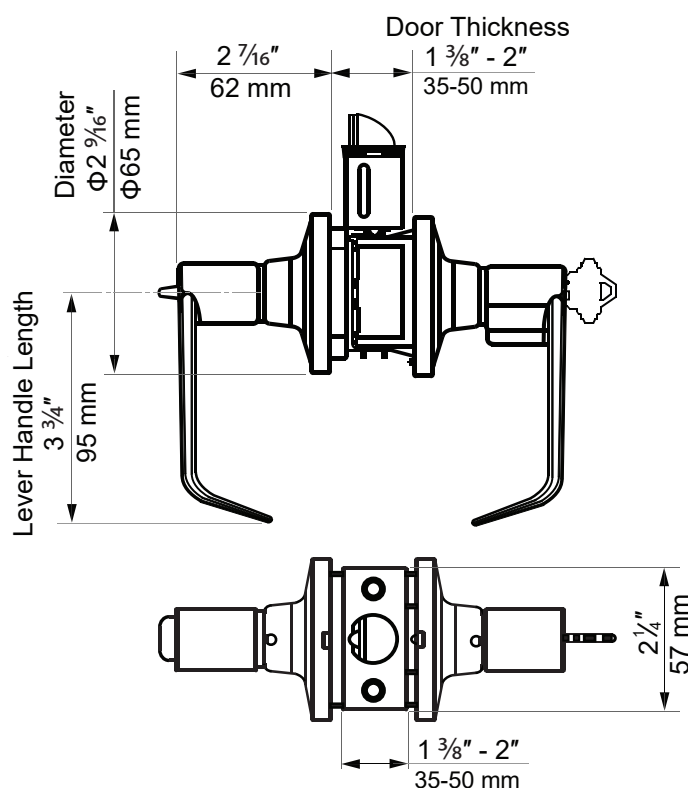
|   |                         |                         |
|---|-------------------------|-------------------------|
| <b>MODEL:</b> SCH2F6631   | <b>MODEL:</b> SCH2F6632 | <b>MODEL:</b> SCH2F6633 |
| <b>TYPE:</b> ENTRANCE   | <b>TYPE:</b> PRIVACY    | <b>TYPE:</b> PASSAGE    |
| <b>COLORS:</b> SATIN CHROME / US26D; SATIN NICKEL / US15; OIL-RUBBED BRONZE / US10B |                         |                         |



### SCH2F6600 SERIES FEATURES

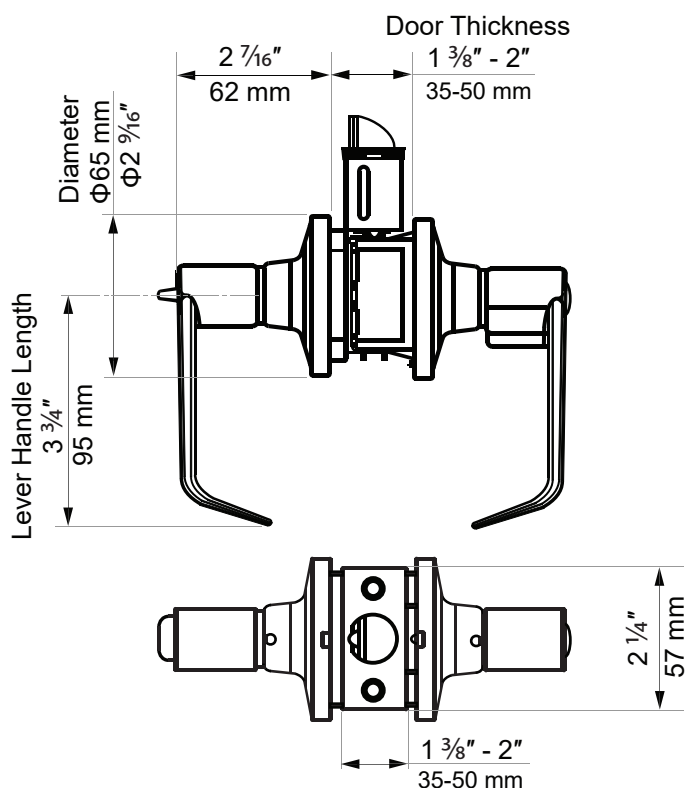
|   |   |
|---|---|
| <b>Material:</b> Zinc Alloy   | <b>Certification:</b> ANSI G2 / UL /3-Hour                                    |
| <b>Door Thickness:</b> 1 3/8" - 2" (35-50 mm)   | <b>Dimensions:</b> 4 1/8" or 105 mm (lever)                                   |
| Meets ADA requirements & exceeds 400,000 cycles   | Salt spray testing can reach up to 200 hours                                  |
| High-precision, pick-resistant 6-pin tumbler solid brass cylinder with interchangeable standard design      | Cylinders can be construction-keyed or master-keyed based on customer request |
| Suitable for different doors with an optional removable thru bolt, providing great strength and durability. | Diameter 2 5/16" (65 mm) diameter SUS 304 stainless steel rose for durability |

# SCH2F6600 SERIES CYLINDRICAL LEVERSET SPECIFICATIONS










MODEL: SCH2F6631

TYPE: ENTRANCE



MODEL: SCH2F6632

TYPE: PRIVACY

| FUNCTION  | SCH | ANSI | DESCRIPTION   |
|---|-----|------|---|
|  | 10  | F75  | Passage or Closet Latch – Latch bolt operated by lever, from either side at all times.  |
|  | 40  | F76  | Privacy, Bedroom or Bath Lock – Latch bolt operated by lever from either side. Outside lever is locked by push button unlocked by emergency release outside, operating inside lever or closing door.  |
|  | 53  | F82  | Entry Lock – Deadlocking latch bolt operated by lever from either side except when outside lever is locked by push or turn button. When outside lever is locked, operating key in outside lever or operating inside lever unlocks push button and retracts latch bolt. Closing door does not release push button. |
|  | 70  | F84  | Classroom Lock – Deadlocking latch bolt operated by lever from either side except when outside lever is locked from outside by key. When outside lever is locked latch bolt is operated by inside lever.  |
|  | 80  | F86  | Storeroom or Closet Lock – Deadlocking latch bolt operated by key in outside lever, or by operating inside lever. Outside lever is always inoperable.   |
|  | 25  | F111 | Exit or Communicating Passage Lock – Deadlocking latch bolt operated by lever one side only at all times. Non removable blank trim or no trim outside.  |
|  | 170 |      | Dummy Trim 1 Side – Used as door pull or as matching inactive trim.   |

## Function Codes

10 Passage  
40 Privacy, Bedroom or Bath Lock  
53 Entrance Lock  
70 Classroom Lock  
80 Storeroom  
25 Communicating Passage Lock  
170 Dummy Trim, 1 Side, Eclipse



### Lever Trim

### Mechanical Locksets



R Type



L Type (Standard)



R-IC Type



L-IC Type

## Finish

|                                |                                |
|--------------------------------|--------------------------------|
| <b>Q</b> 626 Dull Chrome (std) | <b>H</b> 613 Oil Rubbed Bronze |
| <b>C</b> 605 Bright Brass      | <b>D</b> 606 Dull Brass        |
| <b>F</b> 611 Bright Bronze     | <b>G</b> 612 Dull Bronze       |
| <b>P</b> 625 Bright Chrome     |                                |

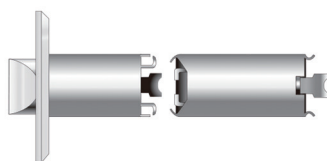
## Latch bolt



Deadlatch



Springlatch



5" backset  
extension

(1"=25.4 mm)

**B1** 2 3/4" dead latch (standard)  
**B2** 2 3/8" dead latch  
**B3** 2 3/4" spring latch, passage (standard)  
**B4** 2 3/8" spring latch, passage  
**B5** 2 3/4" spring latch, privacy (standard)  
**B6** 2 3/8" spring latch, privacy  
**BE** 5" backset extension, for use with 2 3/4" latch only

## Strike



ST1



ST2



ST3



ST4

**ST1** ANSI 1 1/4" x 4 7/8" (Standard)

**ST2** T-Strike with dust box, ANSI 1 1/8" x 2 3/4"

**ST3** Full lip strike, 1 5/8" x 2 1/4"

**ST4** Full lip strike with round corners, 1 5/8" x 2 1/4"

## Cylinder or I-Cores

Conventional Cylinders (Schlage 'C' Keyway Standard)  
For RIC or LIC Type

**6PKA** 6 PIN Keyed alike

**6PKD** 6 PIN Keyed different (standard)



IC

Interchangeable Core (Best 'A' Keyway Standard)  
For RIC or LIC Type

**IC6P-KA** 6 pin I-Core, small format, keyed alike

**IC6P-KD** 6 pin I-Core, small format, keyed different

**IC7P-KD** 7 pin I-Core, small format, keyed different

**IC7P-KA** 7 pin I-Core, small format, keyed alike